

Transit Access Equity Analysis

VIA Service to Minority and Low-Income Populations

SA Area Foundation – SALSA Committee
May 12, 2020

Equity Analysis

- Demographic Summary Table & Service Overview
- Title VI (Population) Access
- Household Access
- Employment Access
- Service Agency Access

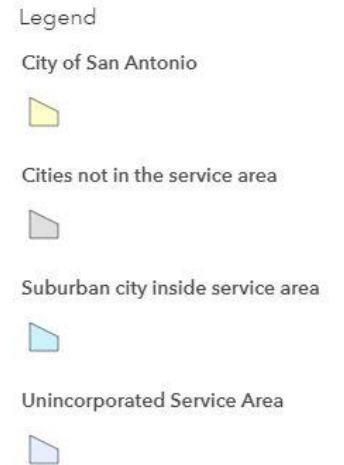
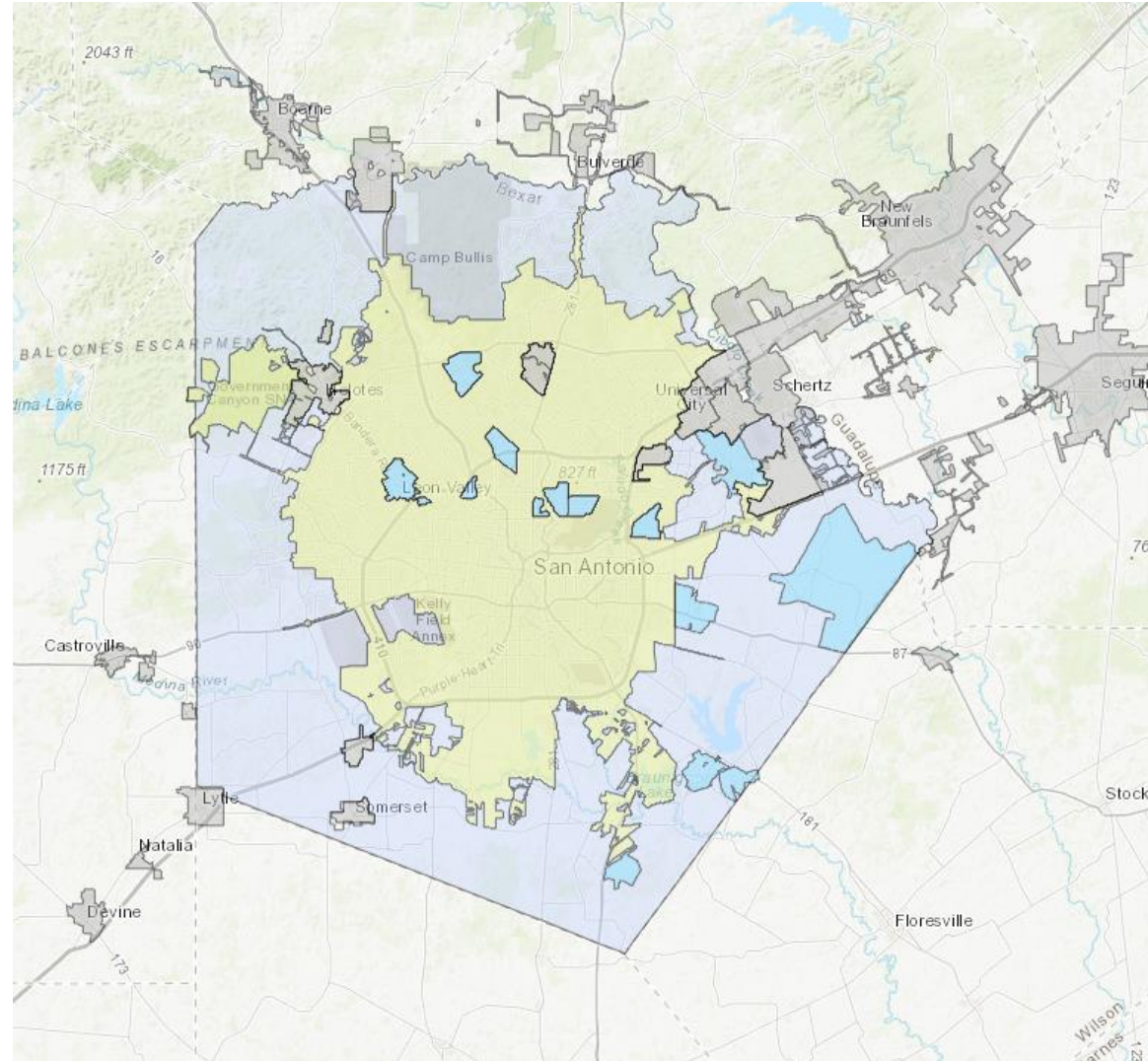
Summary Table

| Population | Percent of total within quarter mile of VIA service |
|---------------------------|---|
| Total Population | 65% |
| Minority Population | 69% |
| Non Minority Population | 53% |
| Low Income Population | 77% |
| Non Low Income Population | 61% |
| Household | Percent of total within quarter mile of VIA service |
| Households | 66% |
| Zero Car Households | 85% |
| Non Zero Car Households | 65% |
| Employment | Percent of total within quarter mile of VIA service |
| Total Employment | 81% |
| Low Wage Employment | 85% |
| Non Low Wage Employment | 80% |

Sources:
 US Census American Fact Finder Tables
 B01003, B03002, B25044, C17002
 US Census LEHD On The Map 2017
 Numbers based on the VIA Service Area

VIA Service Area

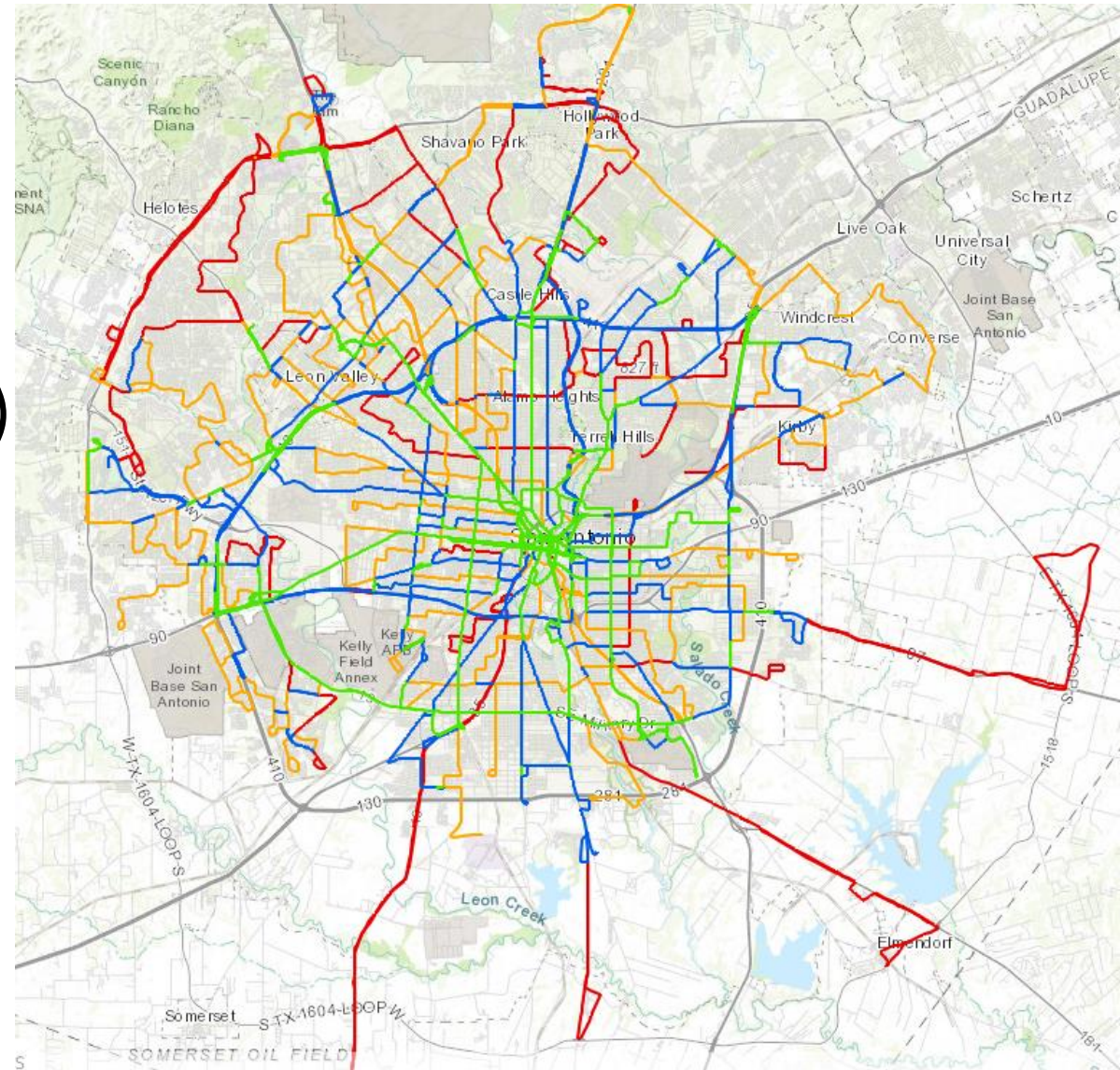
- 98% of Bexar County
- 1,226 square miles covering Bexar County and portions of Medina County



VIA Service Frequency

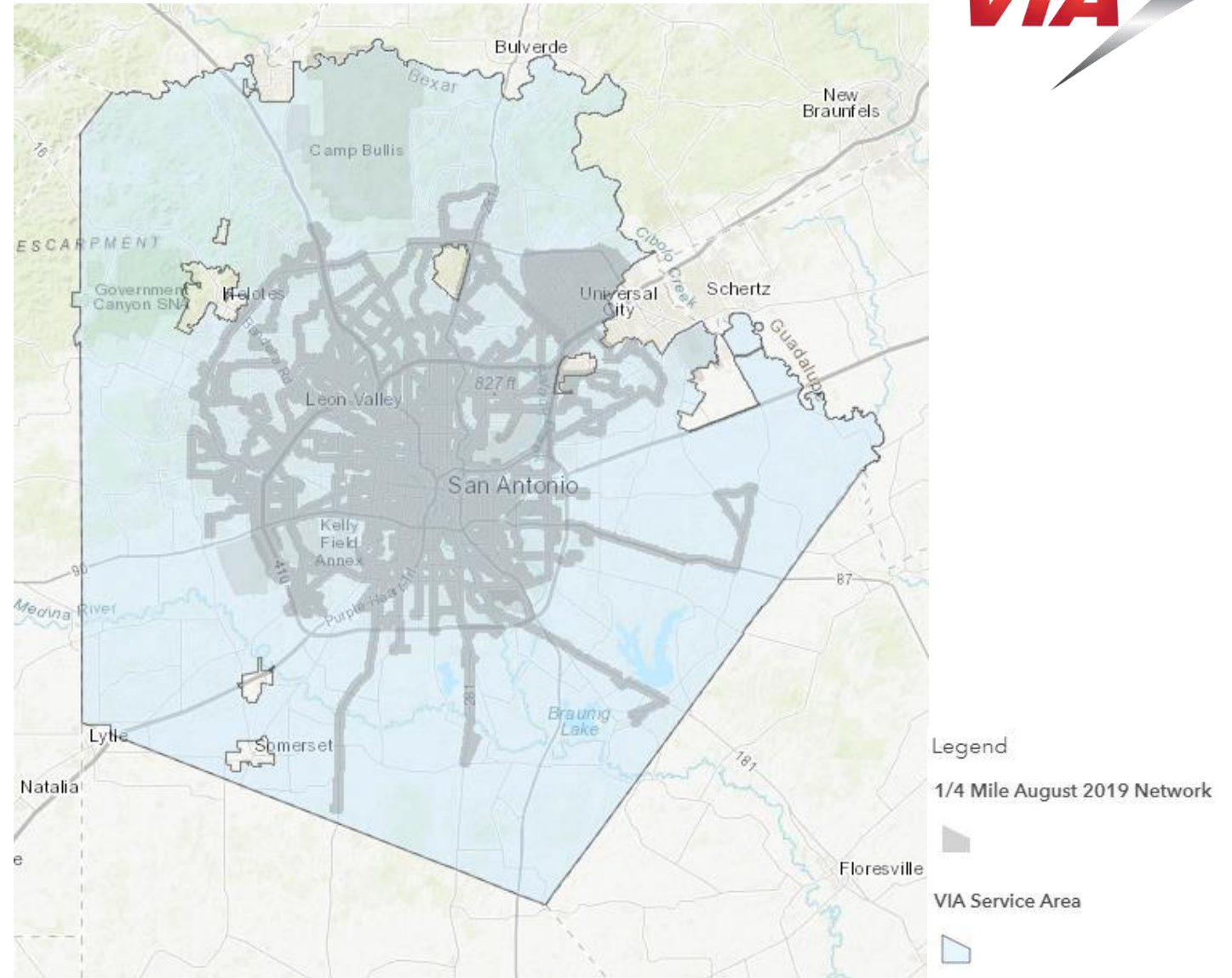
Analysis Categories (average peak frequency)

- Less than 12 minutes
- 15 – 20 minutes
- 30 minutes
- 60 minutes



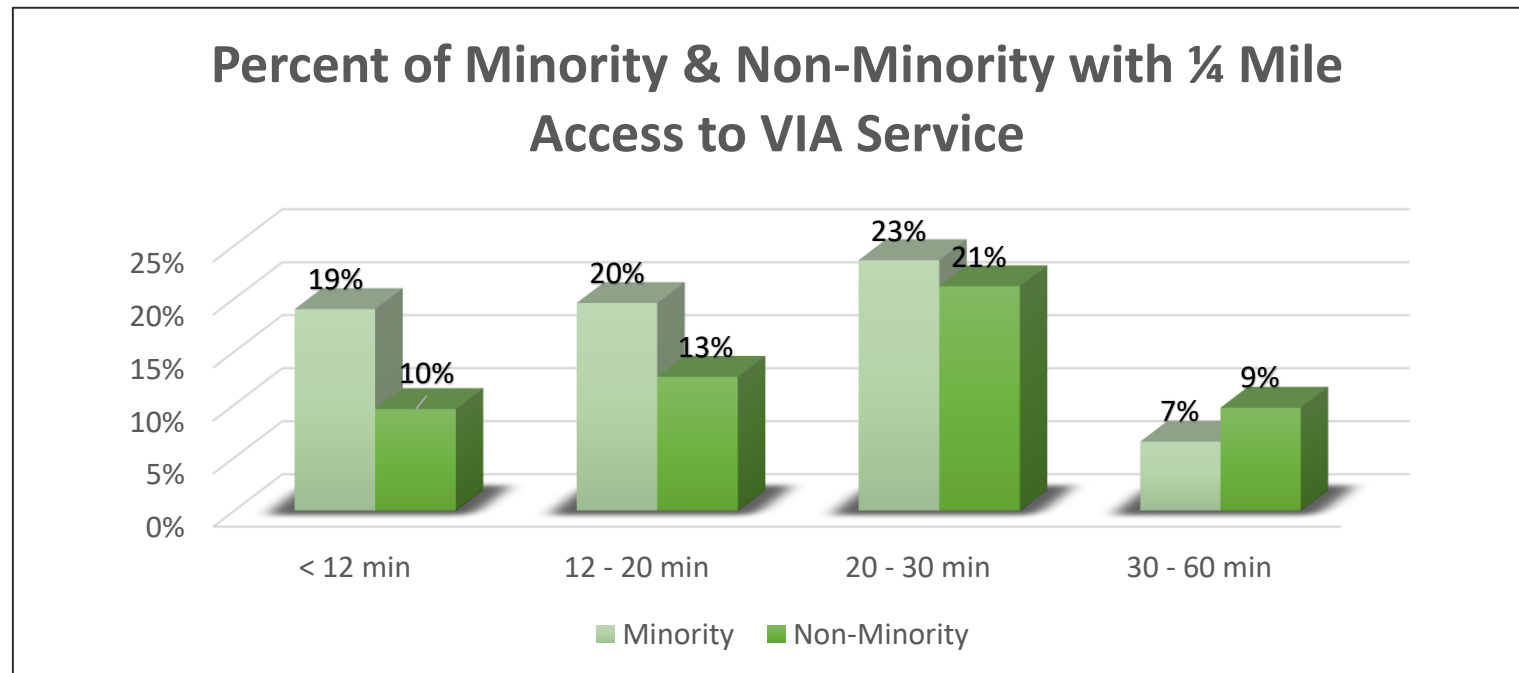
Population

Sixty-five percent (65%) of the total population is within ¼ mile of VIA fixed route service and the VIA Link Zone



Minority & Non-Minority Population

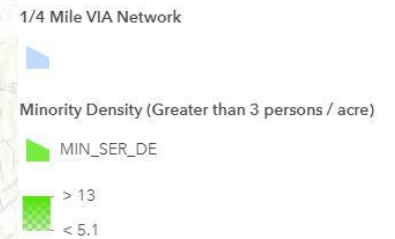
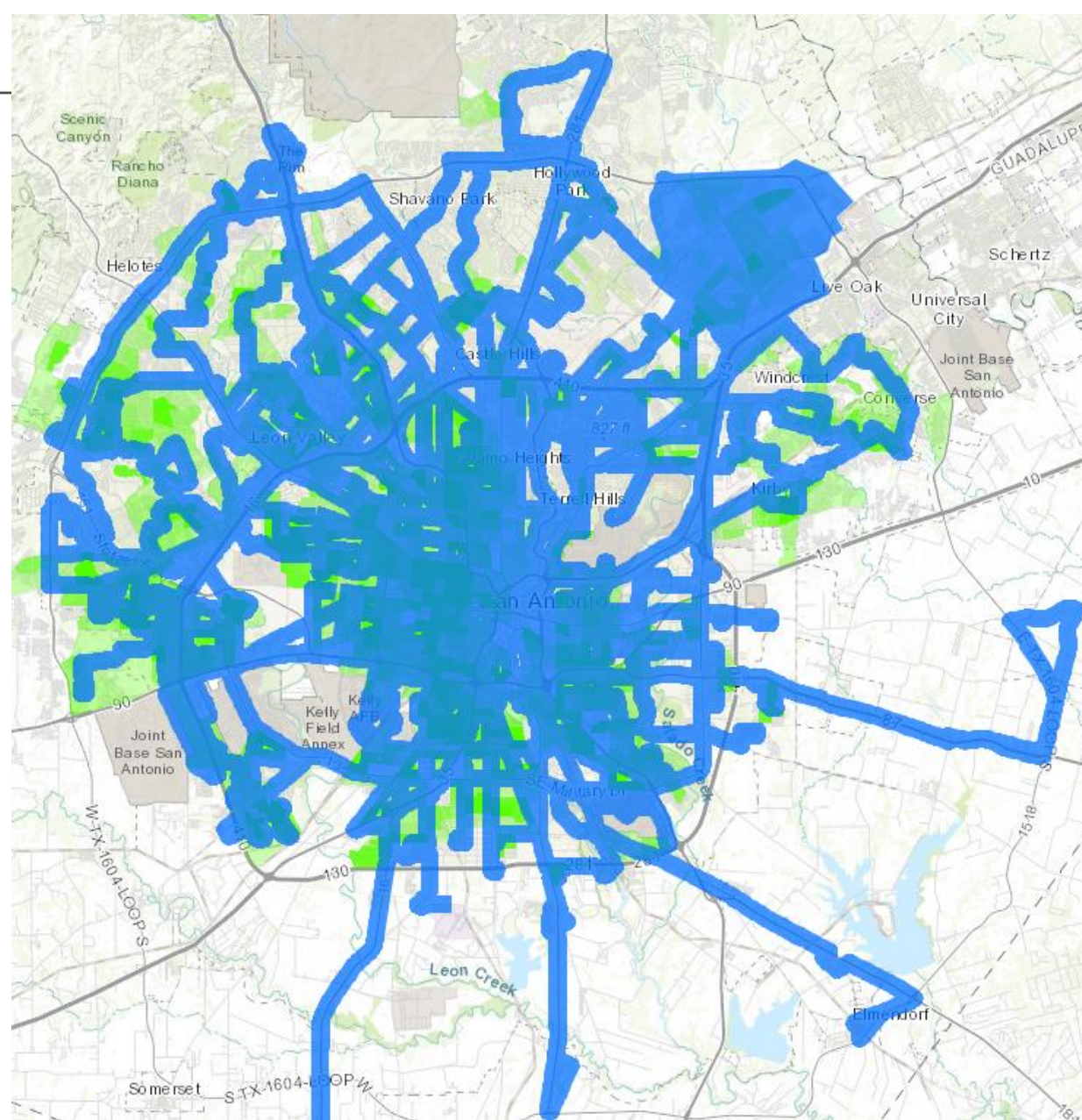
- Sixty-nine percent (69%) of the total minority population is within ¼ mile of VIA fixed route service and the VIA Link Zone
- Fifty-three percent (53%) of the total population minus the total minority population is within ¼ mile of VIA fixed route service and the VIA Link Zone



*US Census American Fact Finder
Table B03002 & VIA August 2019
Network*

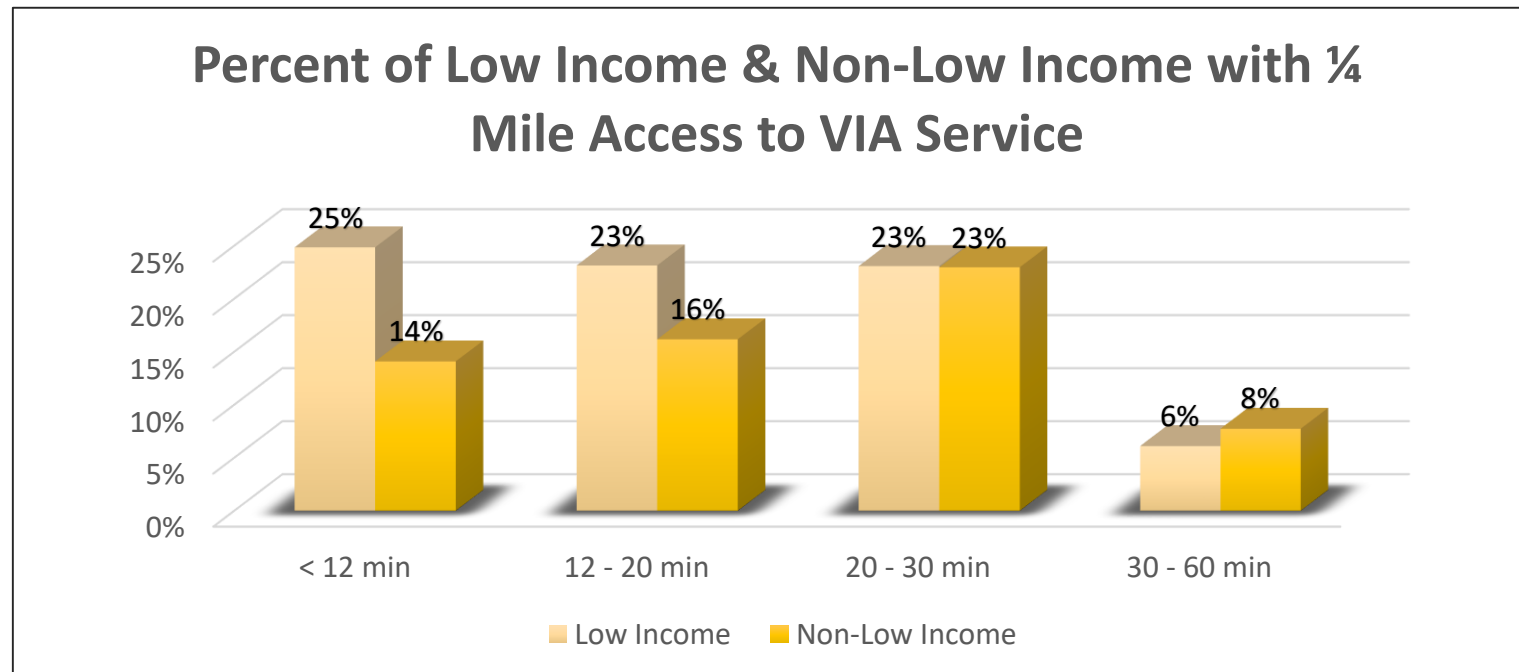


Minority Population Density & ¼ Mile VIA Coverage



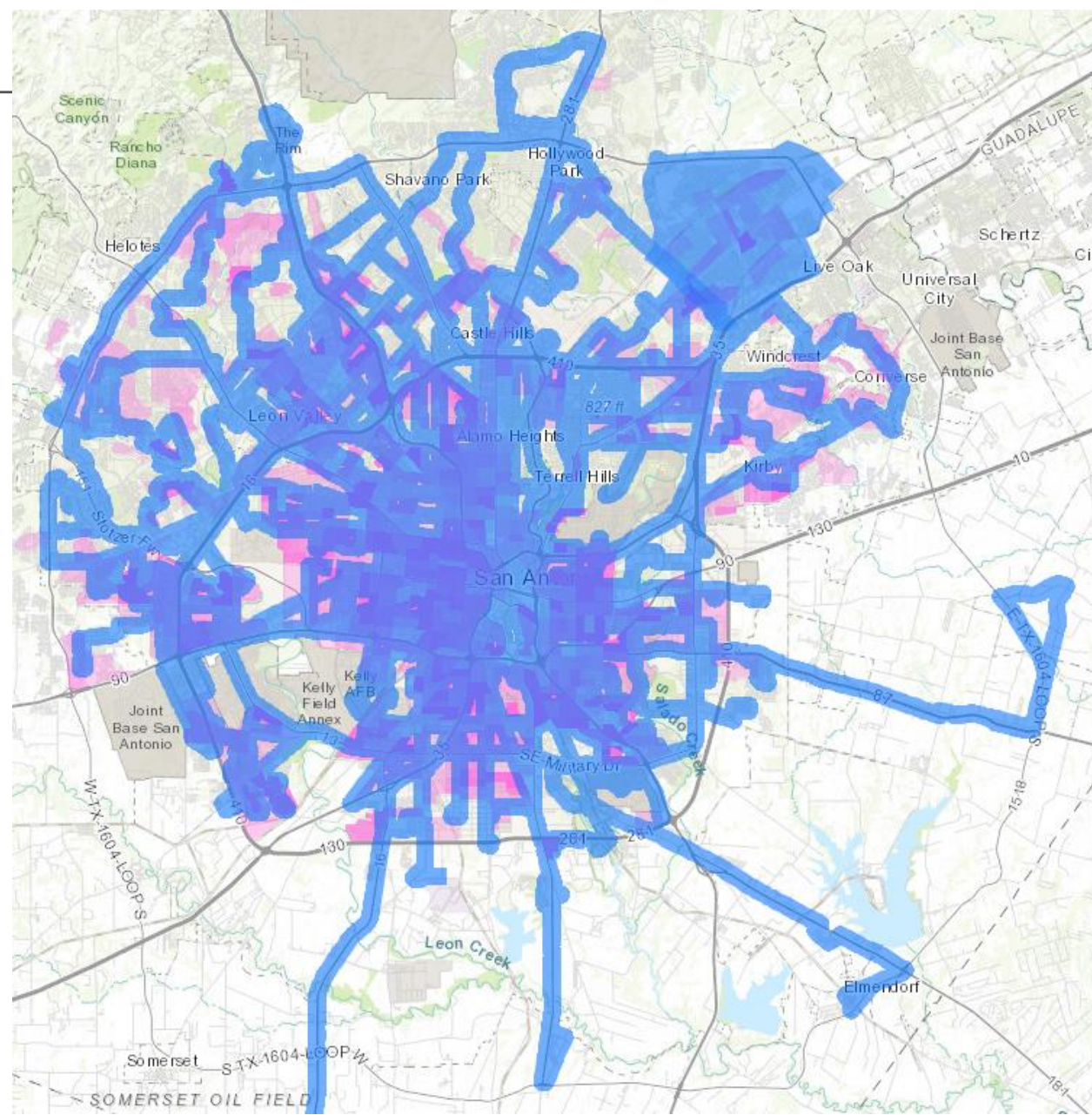
Low Income & Non-Low-Income Population

- Seventy-seven percent (77%) of the total low-income population is within ¼ mile of VIA fixed route service and the VIA Link Zone
- Sixty-one percent (61%) of the total population minus the low-income population is within ¼ mile of VIA fixed route service and the VIA Link Zone



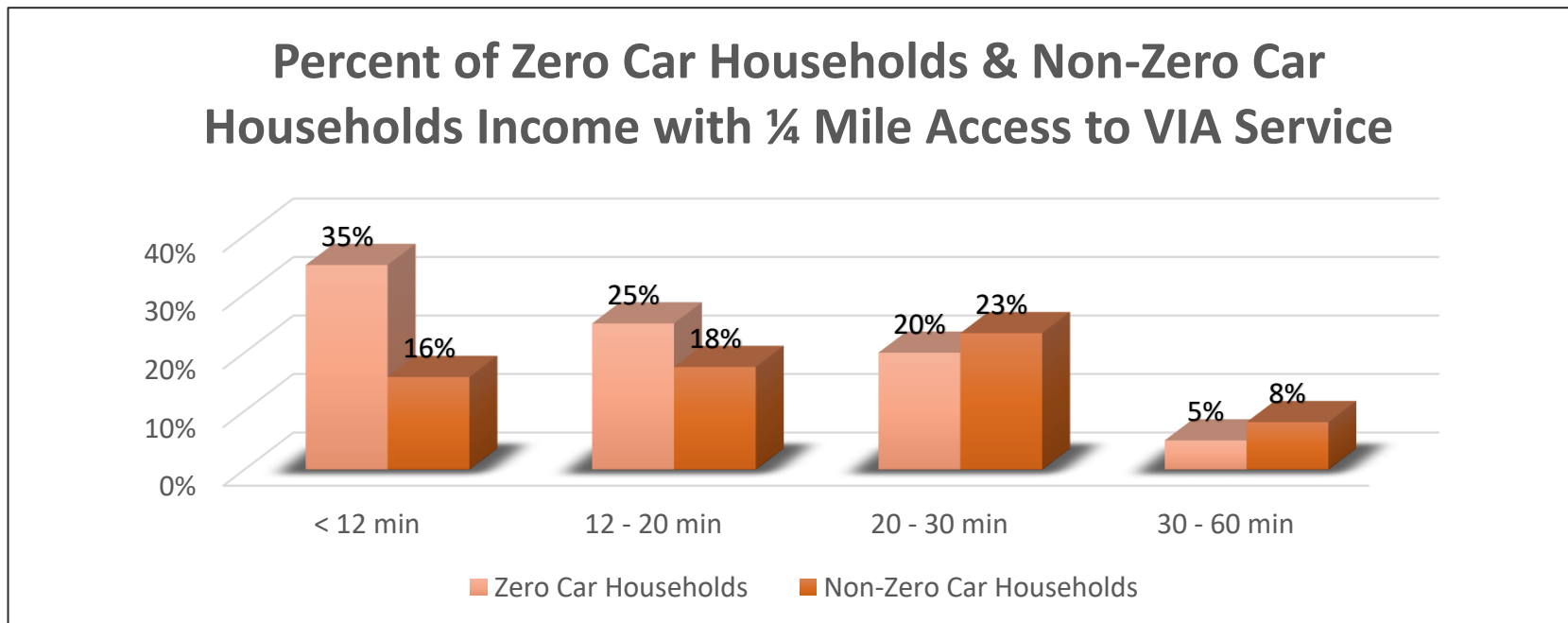
*US Census American Fact Finder
Table C17002 & VIA August 2019
Network*

Low Income Population Density & 1/4 Mile VIA Coverage



Zero Car Households

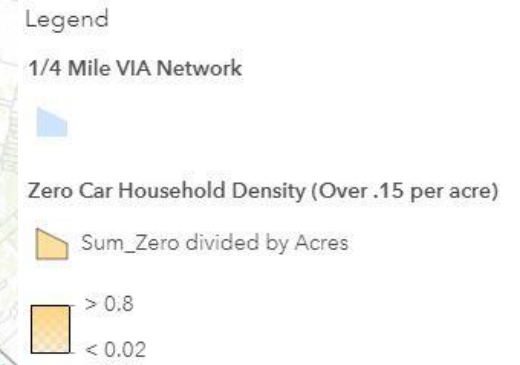
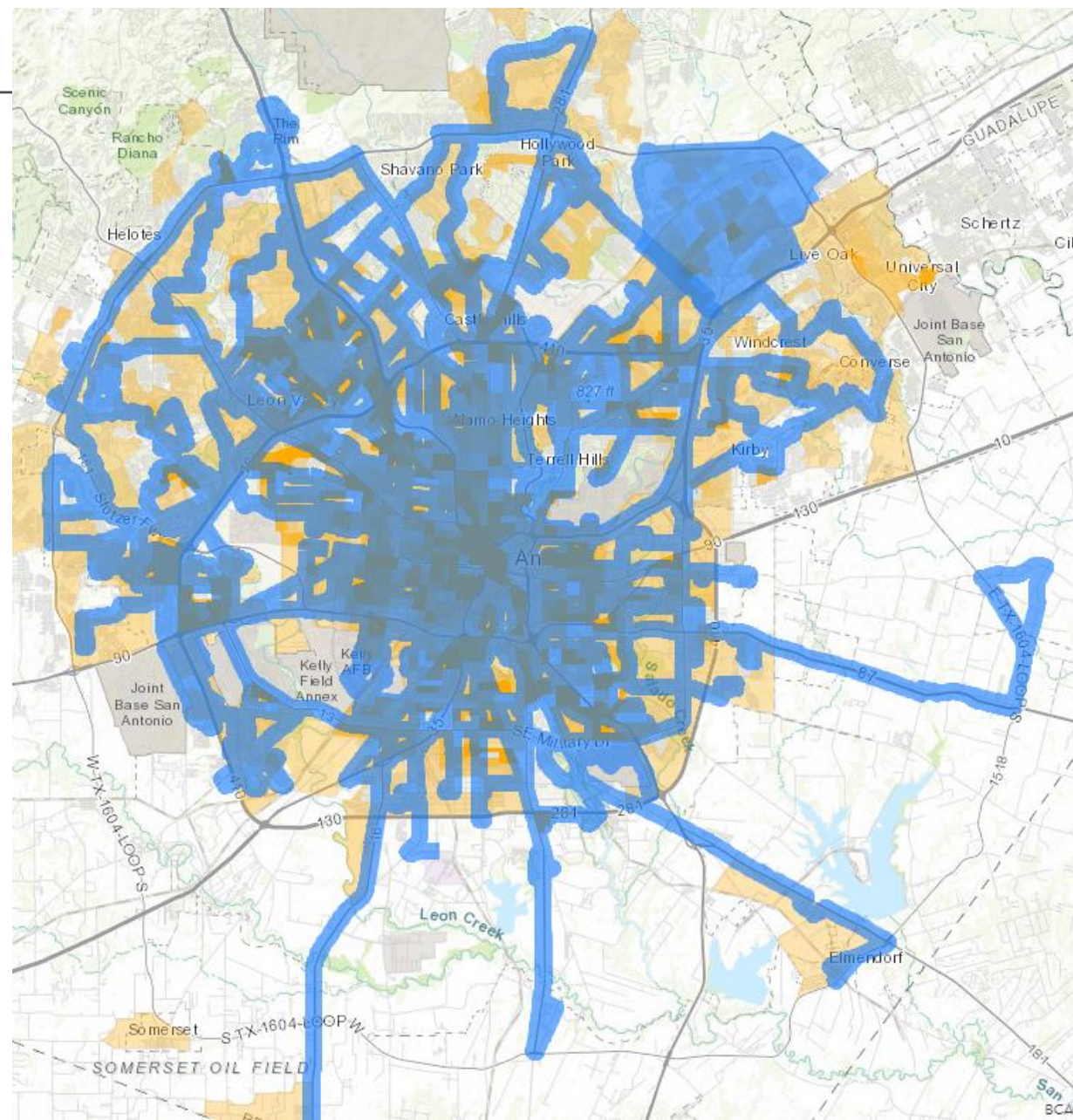
- Eighty-five percent (85%) of all zero car households are within 1/4 mile of VIA fixed route service & VIA Link Zone
- Sixty-five percent (65%) of the total households minus total zero car households are within 1/4 mile of VIA fixed route service & VIA Link Zone



US Census American Fact Finder Table B24044 & VIA August 2019 Network

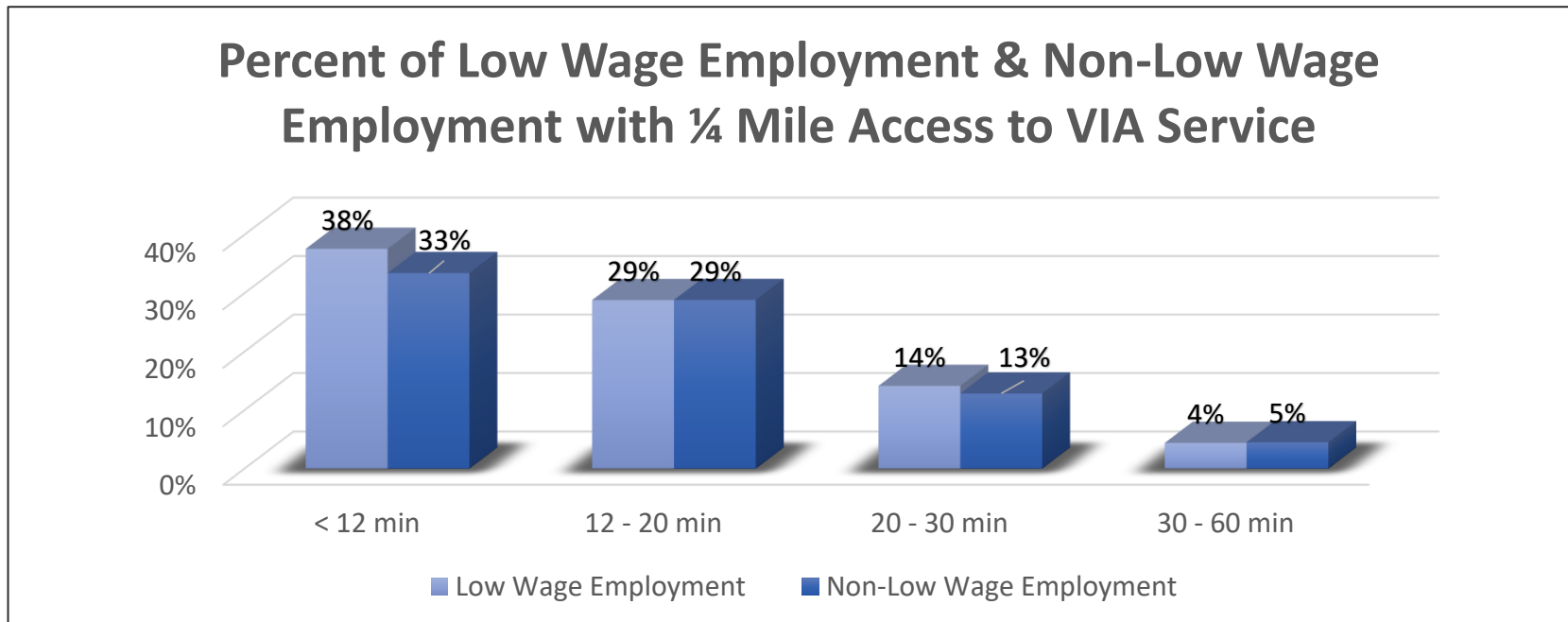


Zero Car Households & 1/4 Mile VIA Coverage



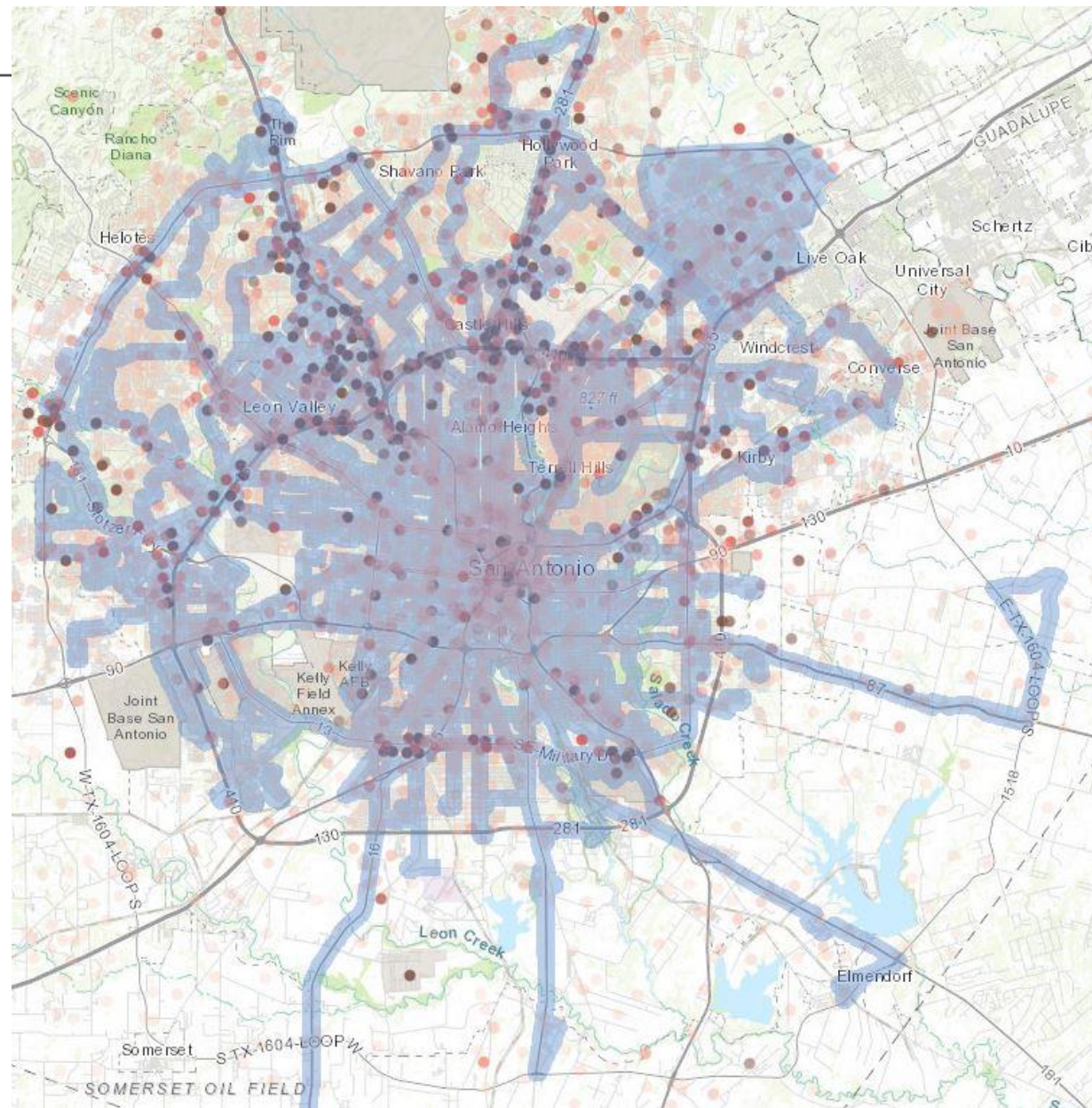
Low Wage Employment

- Eighty-five percent (85%) of low wage employment is within ¼ mile of VIA fixed route service & the VIA Link Zone
- Eighty percent (80%) of low wage employment is within ¼ mile of VIA fixed route service & the VIA Link Zone



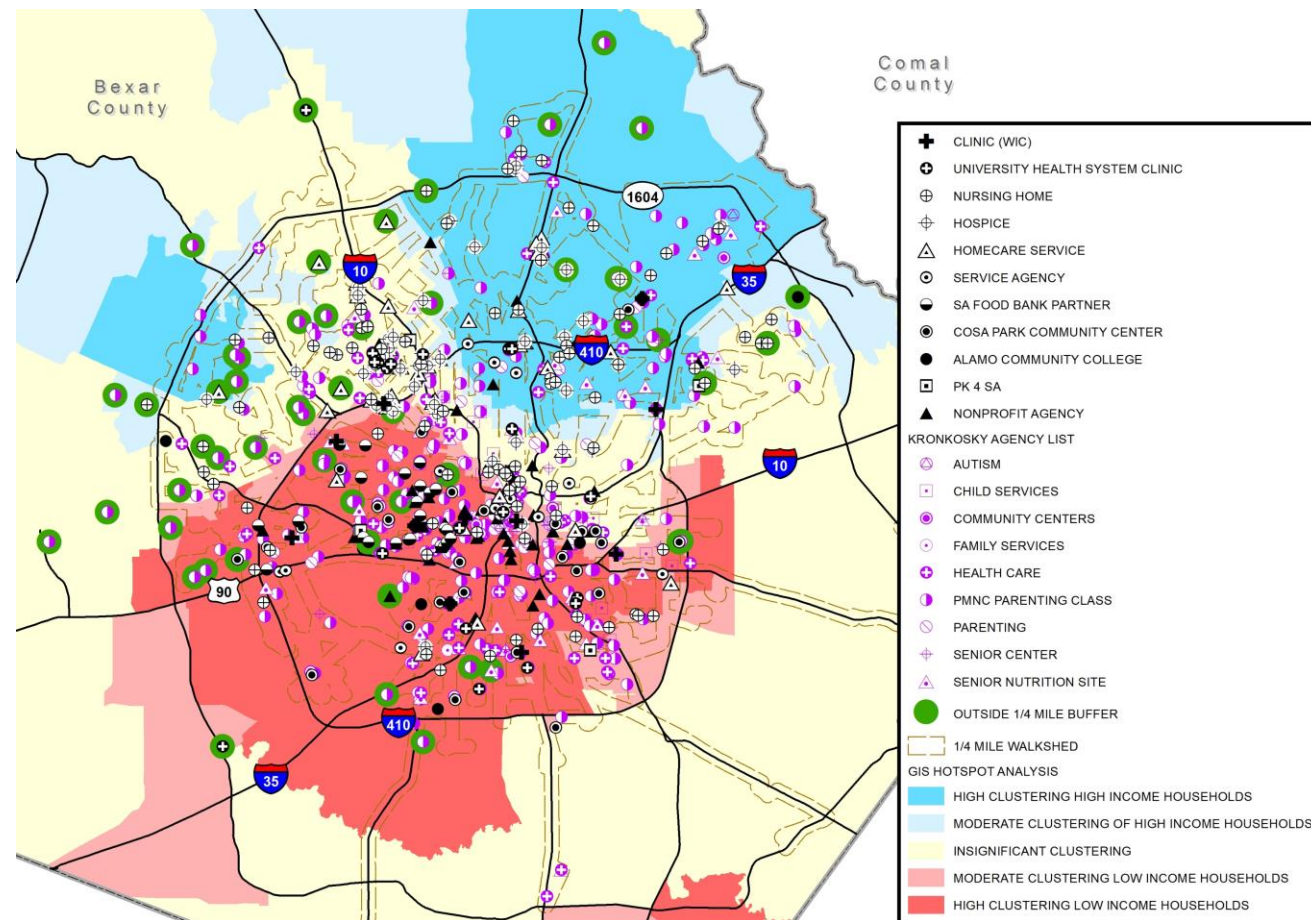
US Census LEHD "On The Map" 2017 & VIA August 2019 Network

Low Wage Employment & 1/4 Mile VIA Coverage



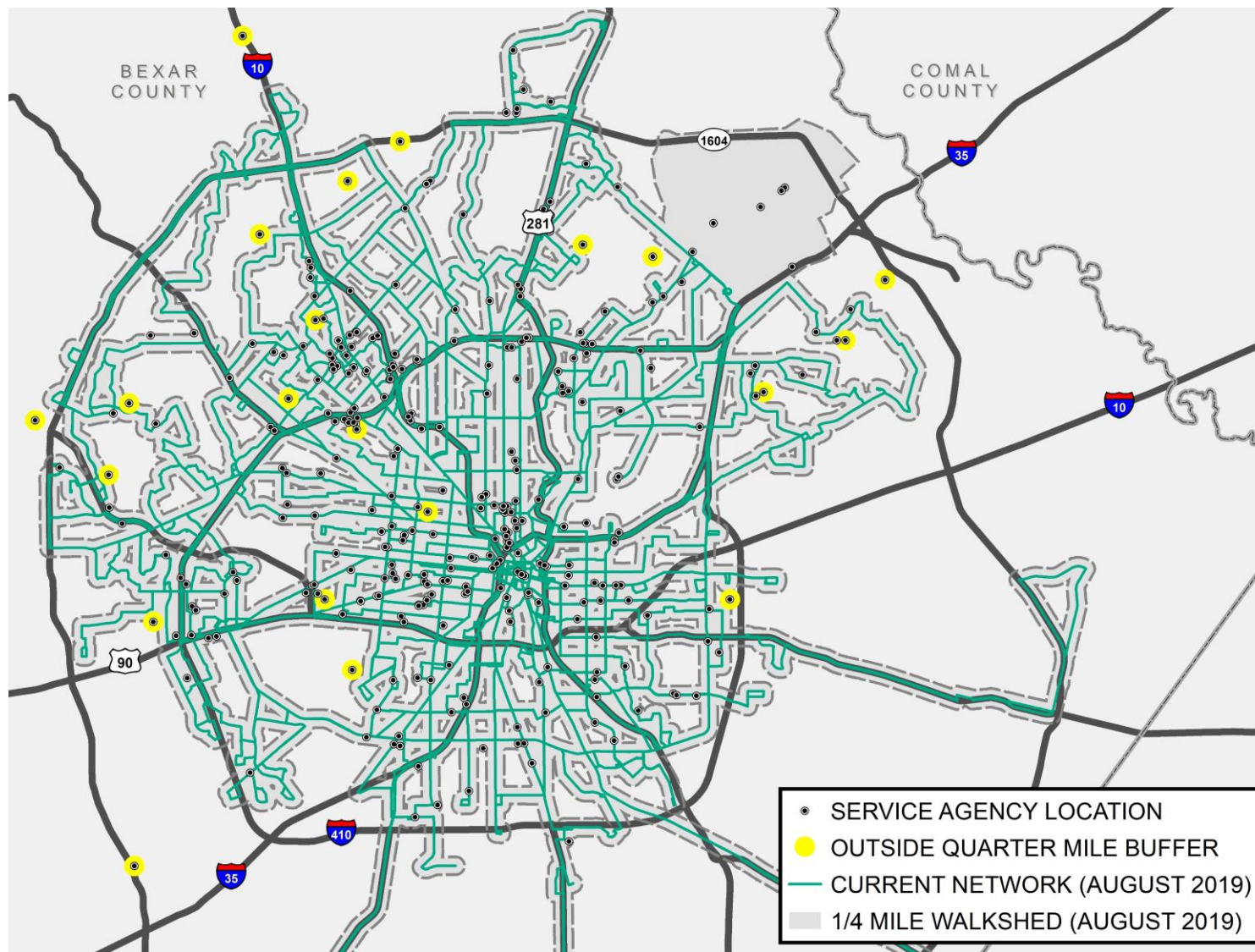
Service Agencies

- 839 agencies in Bexar County that provide public services
- 93% (783) of agencies are within 1/4 mile of the VIA fixed route service & VIA Link Zone
- Examples of agencies include medical, assisted living, non-profit, federal assistance, community centers, and educational agencies.



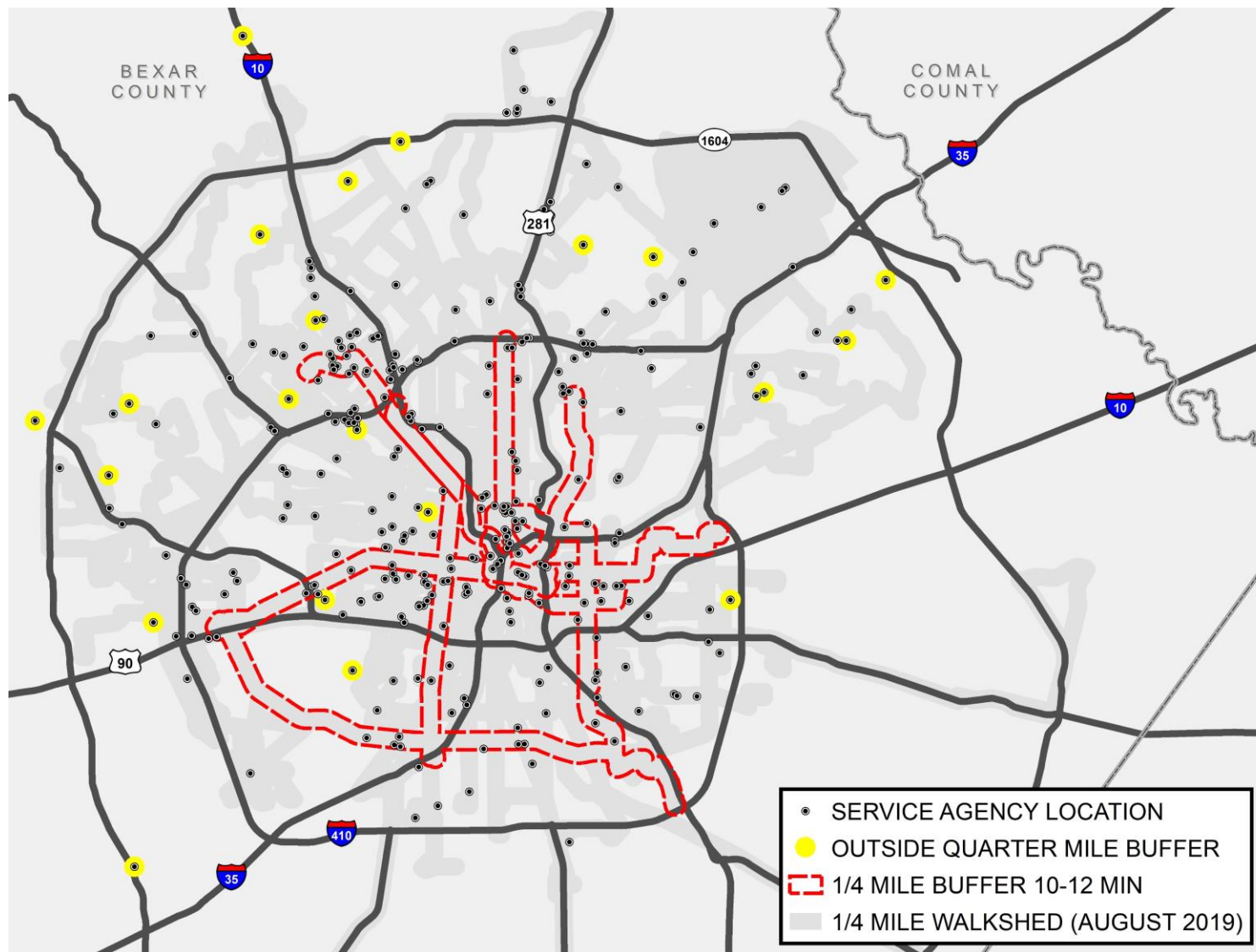
Service Agency & VIA ¼ Mile Coverage

- The locations that are outside of the 1/4 mile are highlighted in yellow.
- 0.5 Miles - Average distance of agencies outside 1/4-mile fixed route service & VIA Link Zone.



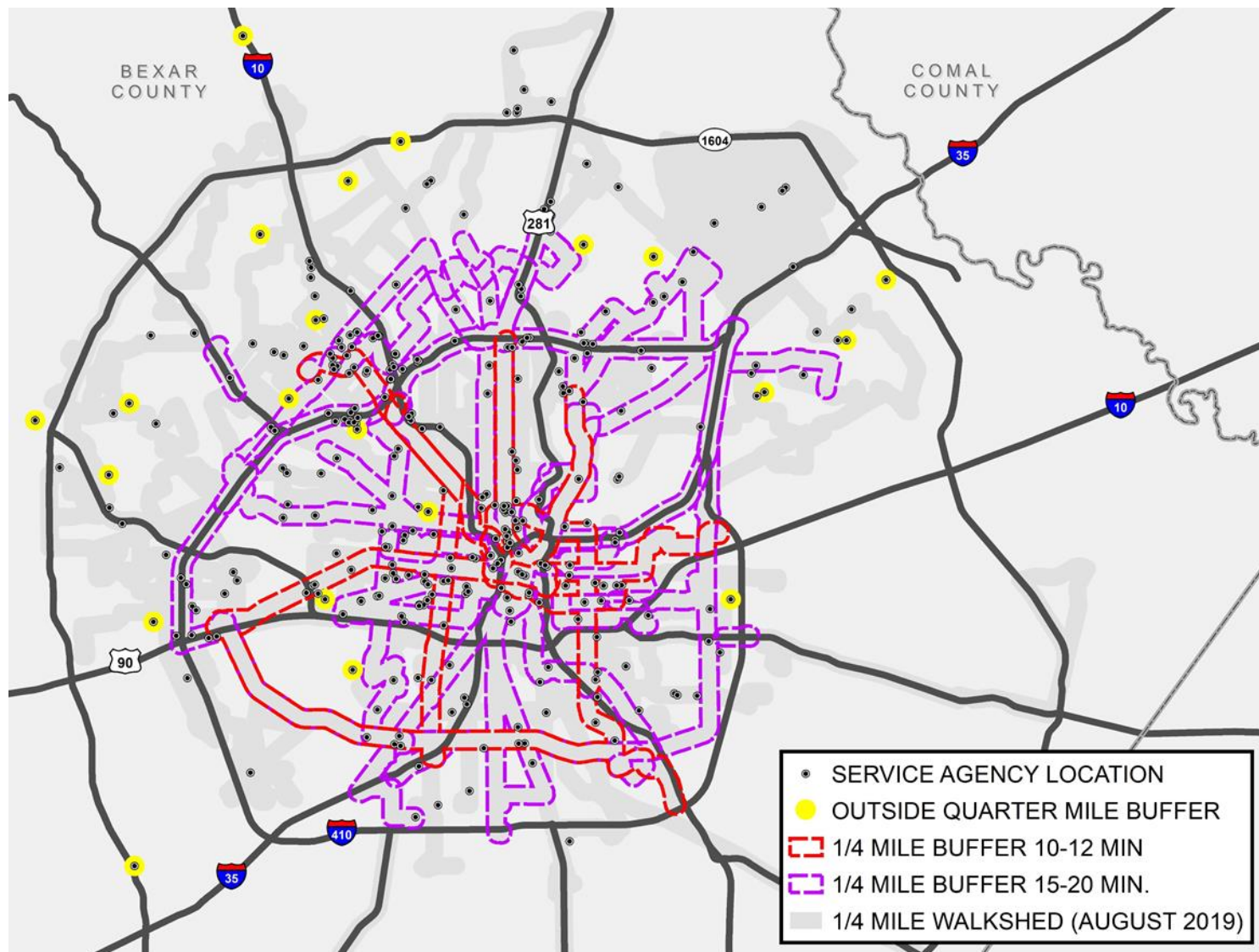
Service Agency Location & Less than 12 min Frequency

- 44% (368) within 1/4 mile



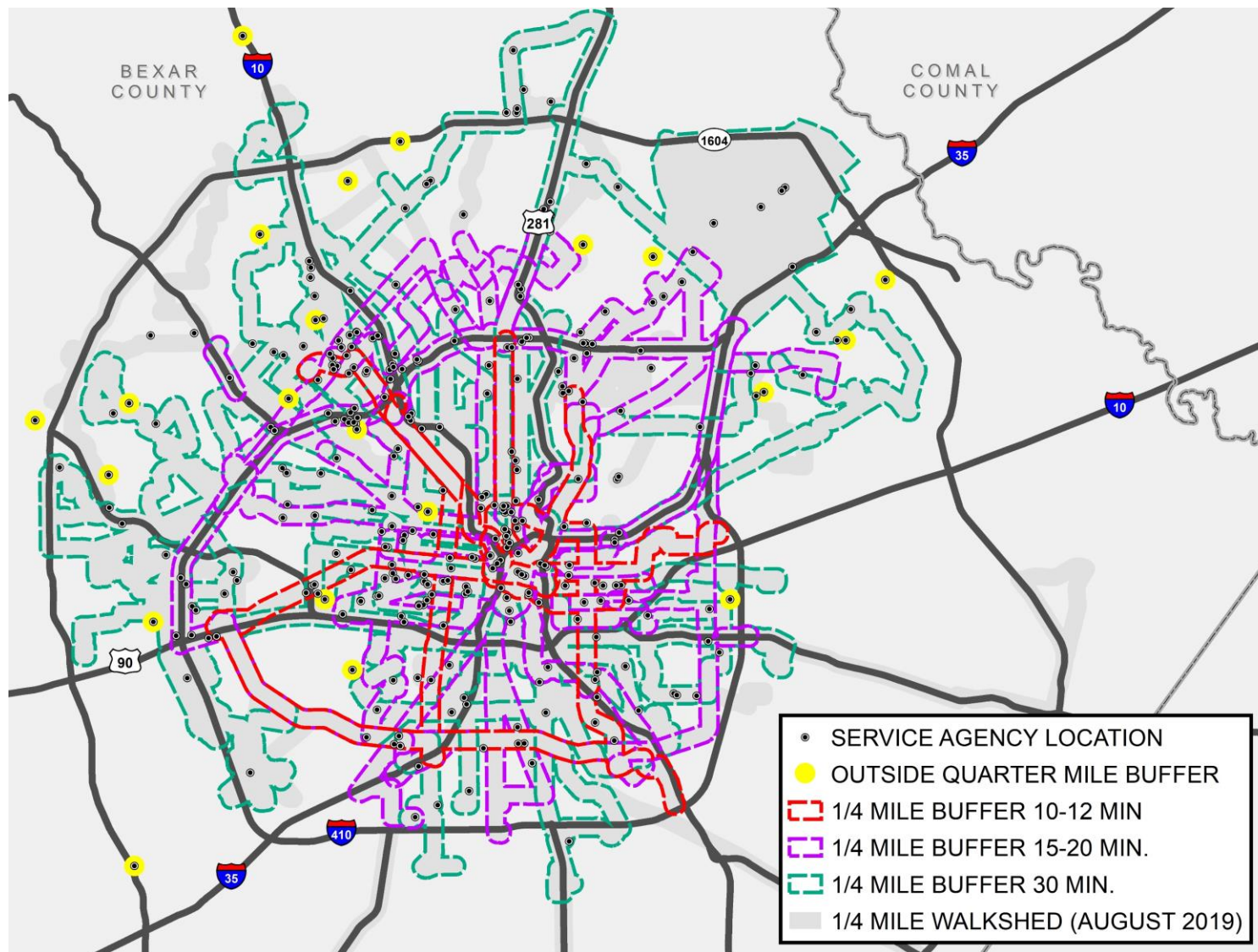
Service Agency Location & Less than 20 min Frequency

- 72% (602) within 1/4 mile



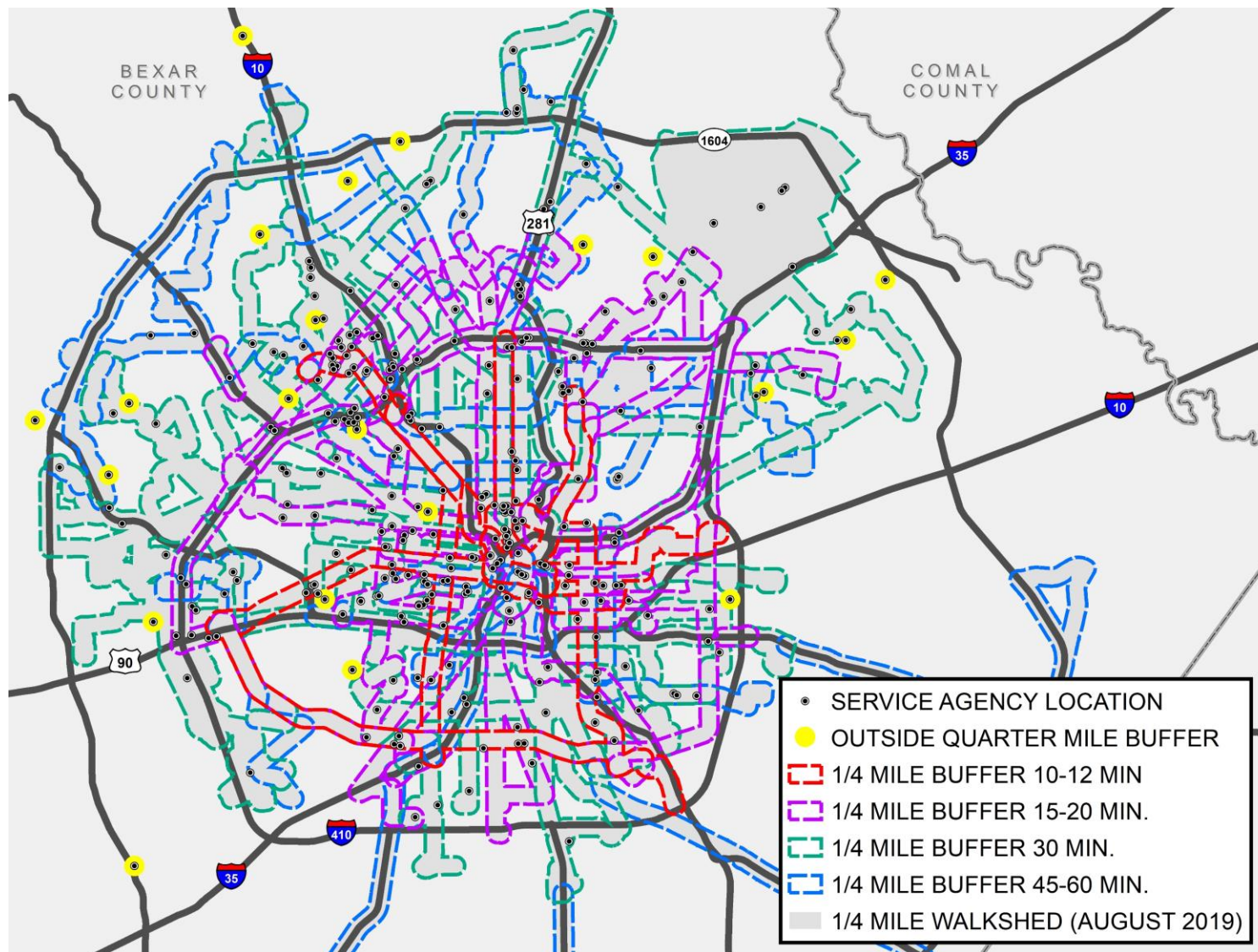
Service Agency Location & Less than 30 min Frequency

- 89% (750) within 1/4 mile



Service Agency Location & Less than 60 min Frequency

- 93% (783) within 1/4 mile



2019 – VIA Reimagined

Older Adults (Population over 65)

- 80% of older adults (65 & over) are within ½ mile of the VIA Network
 - 15% - Access to 12 Minute Network
 - 31% - Access to 20 Minute Network

*Assumes 2020 network using 2017 Data within a half mile

Thank you!